



## Features of the UbiBot IoT Platform



Open Cloud-  
based Platform



Big Data  
Process



Customised  
Service

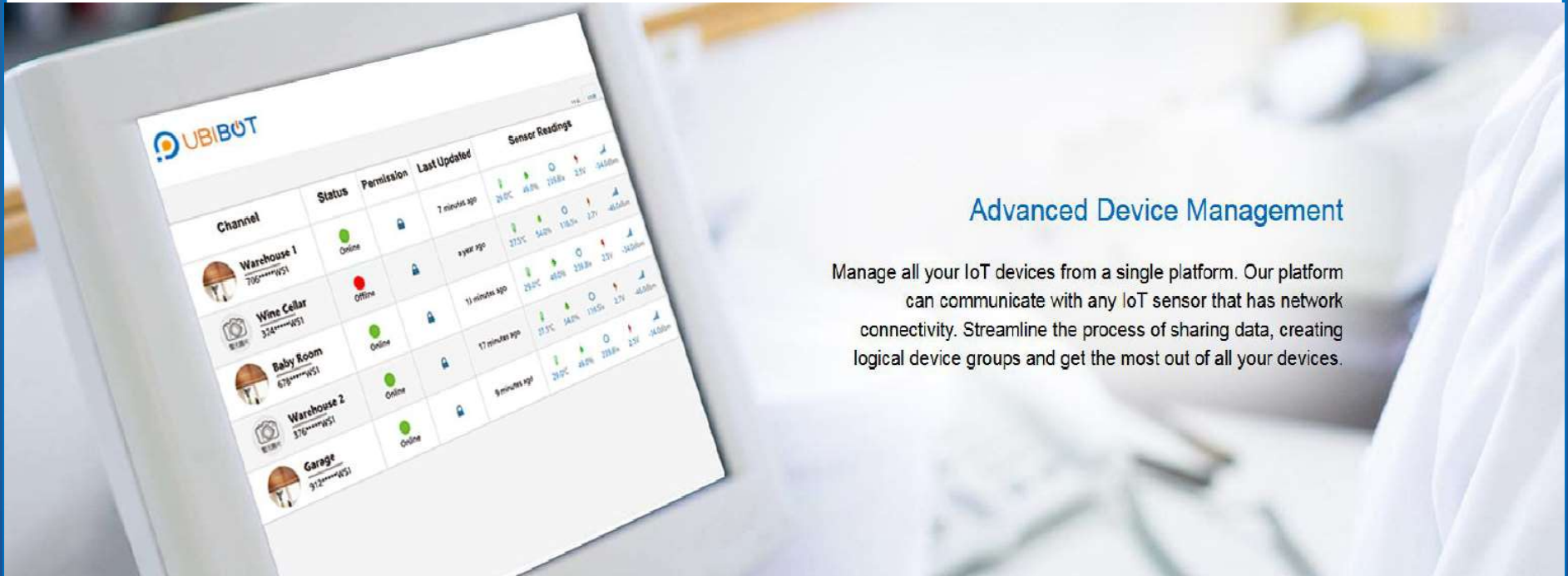


7/24 Data  
Access

- PB level, distributed cross-domain data storage architecture
- Independent development, efficient data processing engine
- Multi-tenant system resources separation technology
- High-performance data compression technology



# Features of the UbiBot IoT Platform



## Advanced Device Management

Manage all your IoT devices from a single platform. Our platform can communicate with any IoT sensor that has network connectivity. Streamline the process of sharing data, creating logical device groups and get the most out of all your devices.

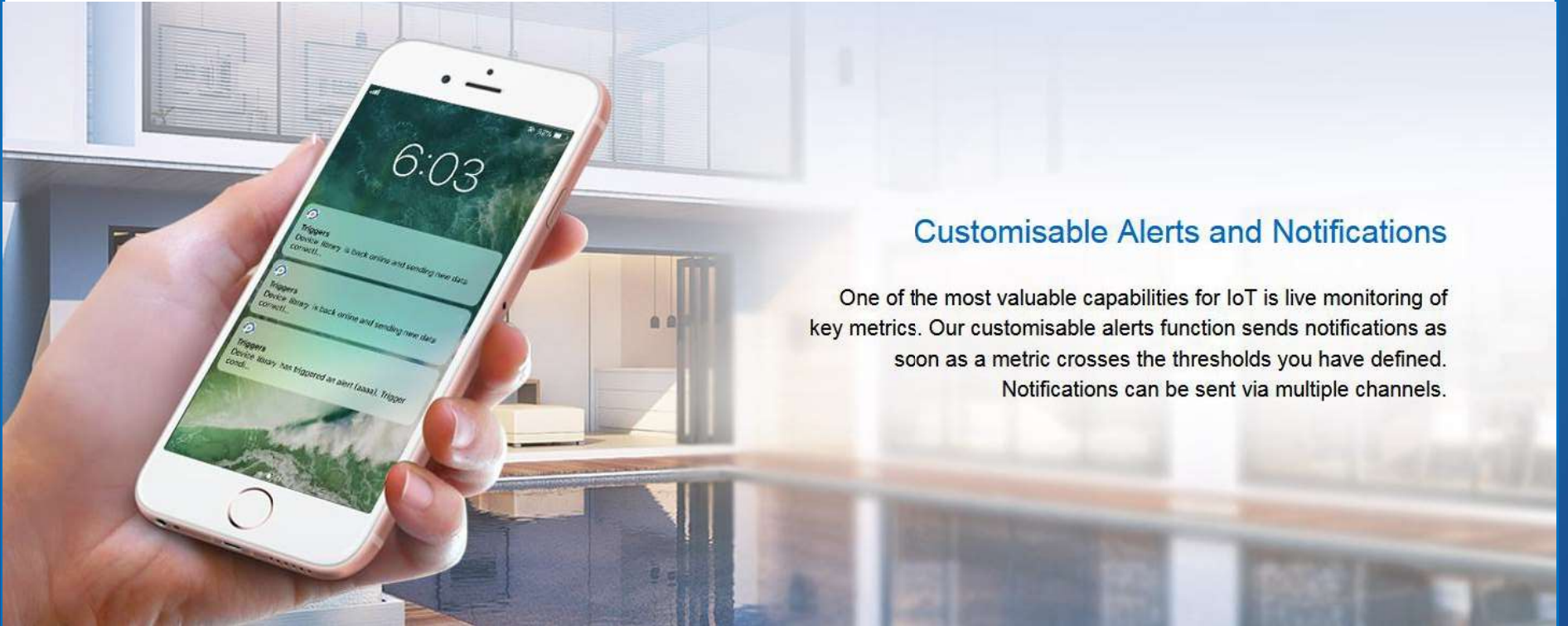


## Features of the UbiBot IoT Platform

### Customisable Alerts and Notifications

One of the most valuable capabilities for IoT is live monitoring of key metrics. Our customisable alerts function sends notifications as soon as a metric crosses the thresholds you have defined.

Notifications can be sent via multiple channels.





## Features of the UbiBot IoT Platform

### Advanced Maps View

We understand that devices might be deployed in multiple locations globally. The UbiBot<sup>®</sup> IoT Platform offers an advanced Map View showing all your devices and allowing you to make direct comparisons on screen.







# Features of the UbiBot IoT Platform

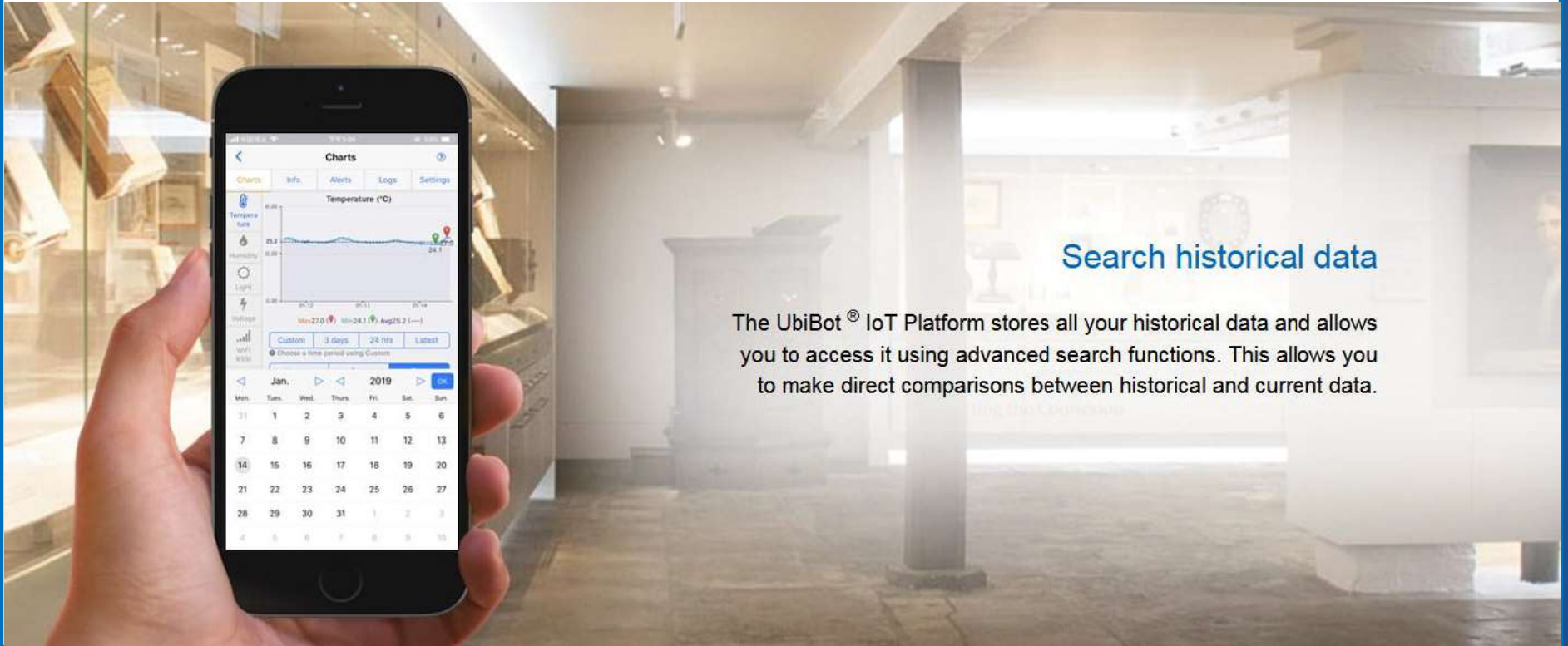
## Data Analysis and Visualisation

UbiBot's online analytical tools allow you to get the most out of your data. We offer advanced graphing and plotting functions that allow you to visualise complex data to spot trends and relationships.





## Features of the UbiBot IoT Platform



### Search historical data

The UbiBot<sup>®</sup> IoT Platform stores all your historical data and allows you to access it using advanced search functions. This allows you to make direct comparisons between historical and current data.



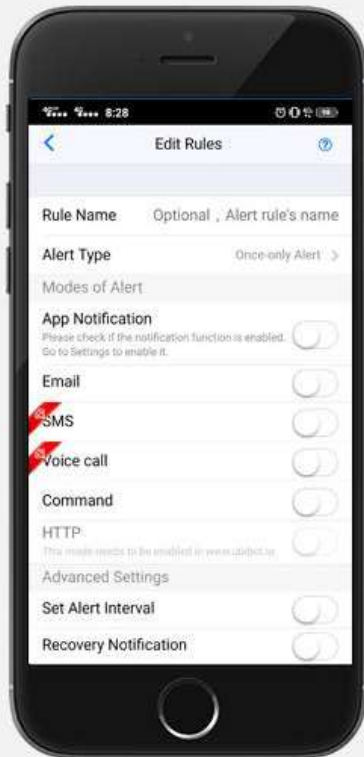
## Features of the UbiBot IoT Platform



**Receive an alert instantly when thresholds you set are exceeded, or if any device goes offline**



# Features of the App



## Multi-channel Configurable Alerts

Real-time alerts for peace of mind

### Advanced Alert Options

Like a good night's sleep? Choose the times an alert is active so you aren't disturbed.

### A Virtual Guardian

Our alert service monitors your devices remotely. Receive alerts if any metric goes outside the range you set.

### Multiple Channels

UbiBot<sup>®</sup> offers multiple channels to receive alerts. From email and voice to in-app notifications and SMS messages.

### Online Monitoring

We alert you as soon as any device goes offline. Remember that our devices still record data when offline, so you won't lose any readings.





# Features of the App

## Data Sharing

Designed to make your life easier

### Around the Clock Monitoring

Share your devices with colleagues, friends or family. Let others help monitor what's happening.

### Shared Alerts

When sharing your device with another person you can also choose to add them to any alerts you have set up. Ideal for on-call team members.

### Real-time Observations

Use the App to view the real-time conditions. Choose who to share the measurements with.

### Manage Data in One Place

The UbiBot<sup>®</sup> App gives you a single place to manage data sharing and gives you a view of who previously had access to the data.

