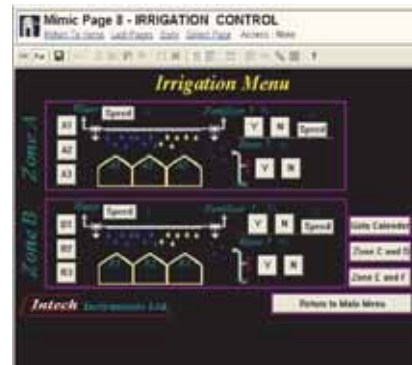
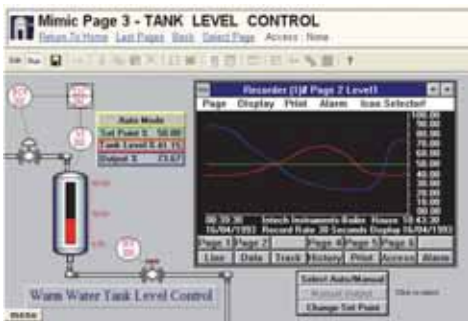
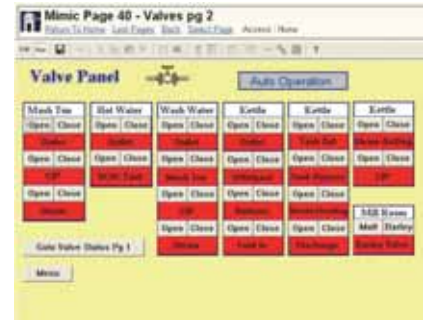


Mimic Module

- Live screen graphics.
- PLC operator control.
- Current plant values and configuration.
- **Intech Micro** remote station support.
- Alarm handling and printing.
- Alarm logs.
- Controller support.
- DDE support.
- Network support.
- Up to 512 on/off software controllers, each with:
 - Set point with differential adjustment.
 - Deviation high and low alarms.



Controller Module

- Up to 99 Shimaden controllers.
- Complete set up and monitoring of controllers and indicators.



PLC Interface Module

- Allows communication between PLC's and Recorder/Mimic modules.
- Note:* Check with Intech engineers to ensure that the interface is available for the PLC to be used.



MicroScan Tool Box Module

- Data transfer.
- Mathematical formulas.
- Passwords.
- Audit tracking.
- Step controller.
- Time clocks.
- Data average & min/max.
- Time functions.
- Data base.
- Other special functions.
 - e.g. relative humidity.
 - cylindrical tank volume.
 - list – look-up table.
 - rate of change.



Network Module

- The ability to store files on a file server computer instead of the local computer to which the field hardware is connected.
- More than one computer can store files on the file server, these files can be picked up by any computer on the network with MicroScan installed.
- Price for the network module does not include the Network itself.
- Data file duplication for security.
- The Network should be installed and successfully running Windows® before installing the MicroScan SCADA package.

